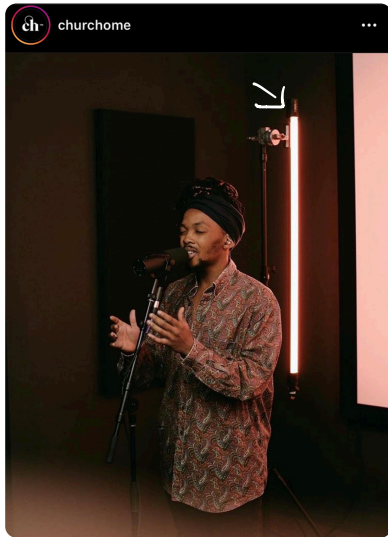
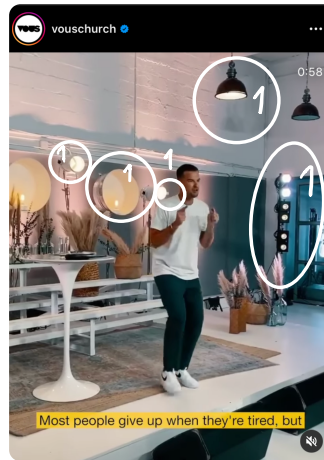


Stage setup Brainstorm inspiration + ideas



We can use the lights we currently have like this

They should be in the back and not in the front.



① maximize lighting

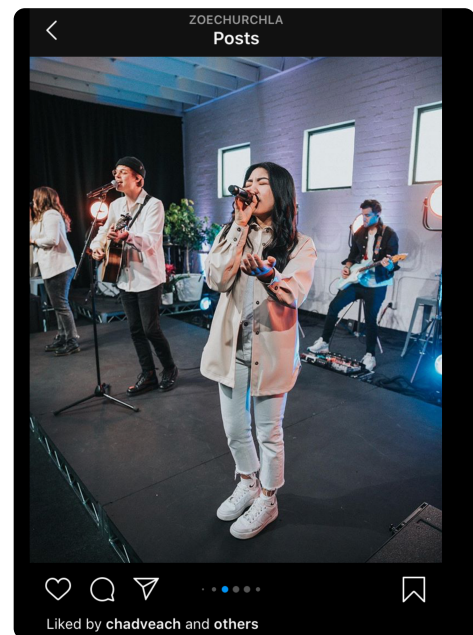
② create depth

③ decor that takes space

* In a dark place the lighting must be behind us as well as in front of us



we can use frames to decorate our bare white wall



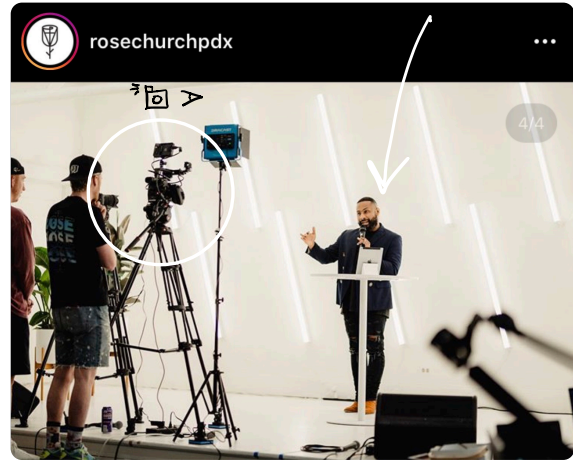
OR it could be what it seems like windows but could be lights!

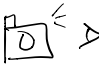


colorful backdrops to be used to convey another vibe!

↳ seen some in IKEA!

white background - classic
- clean
- crisp

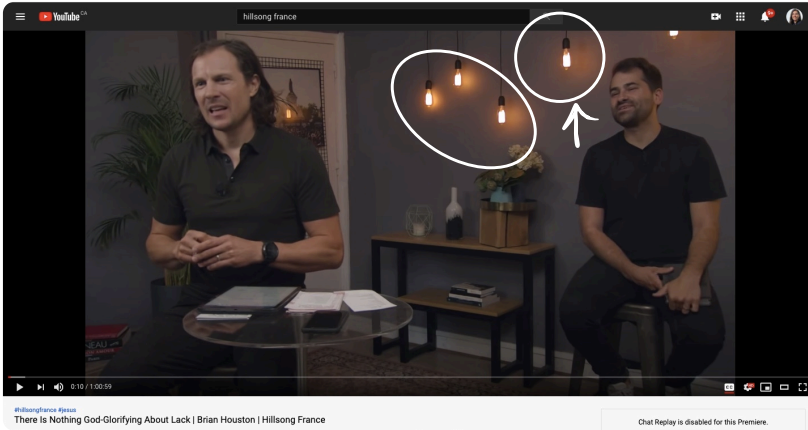


These could be different angles we can use when filming 

sitting close up
OR zoomed out

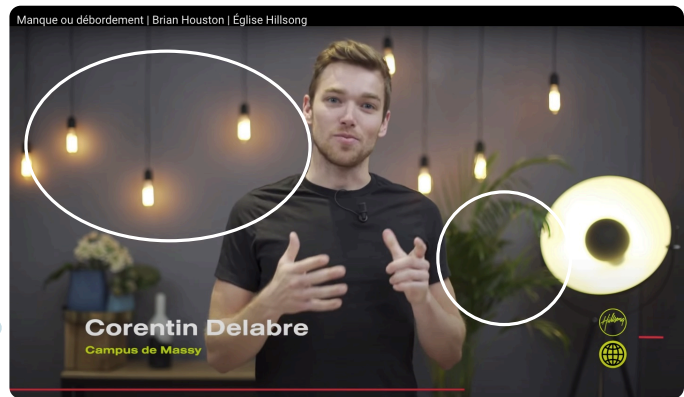
platform gives us height and support.





create a welcoming vibe

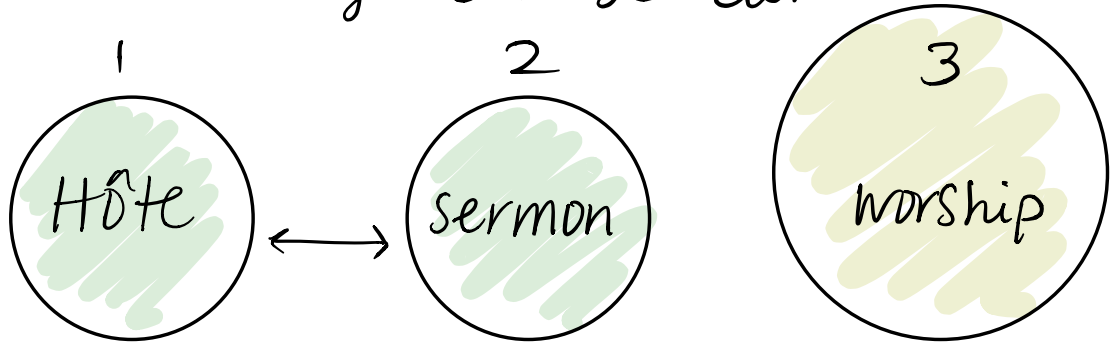
use of plants and lights to be minimalist



The blurred lights can be used to create depth and dimension plants are a great asset too specially in a white background

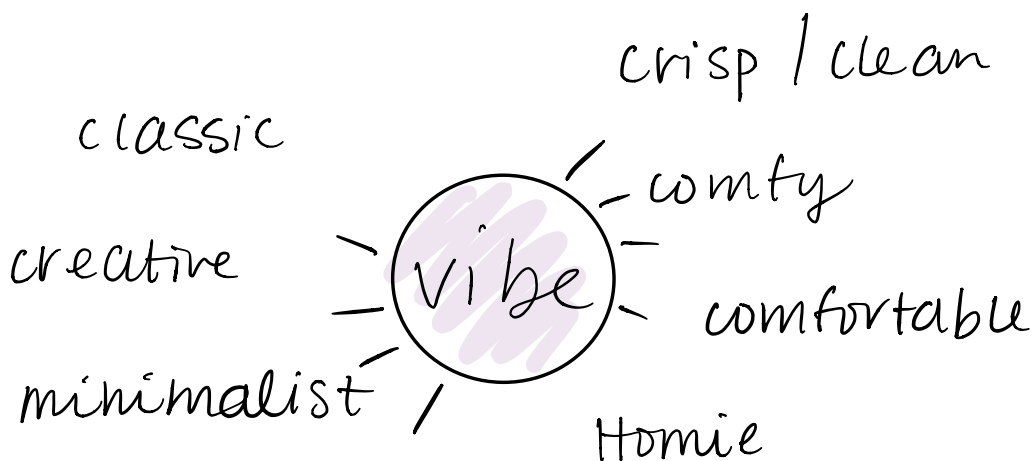
the space needs to be transformational.

A space where minimal change can be done...



could have the same set up could be interchangeable. Decor can change...

needs a BIGGER space. It's a set decor can change but it needs to be minimal...



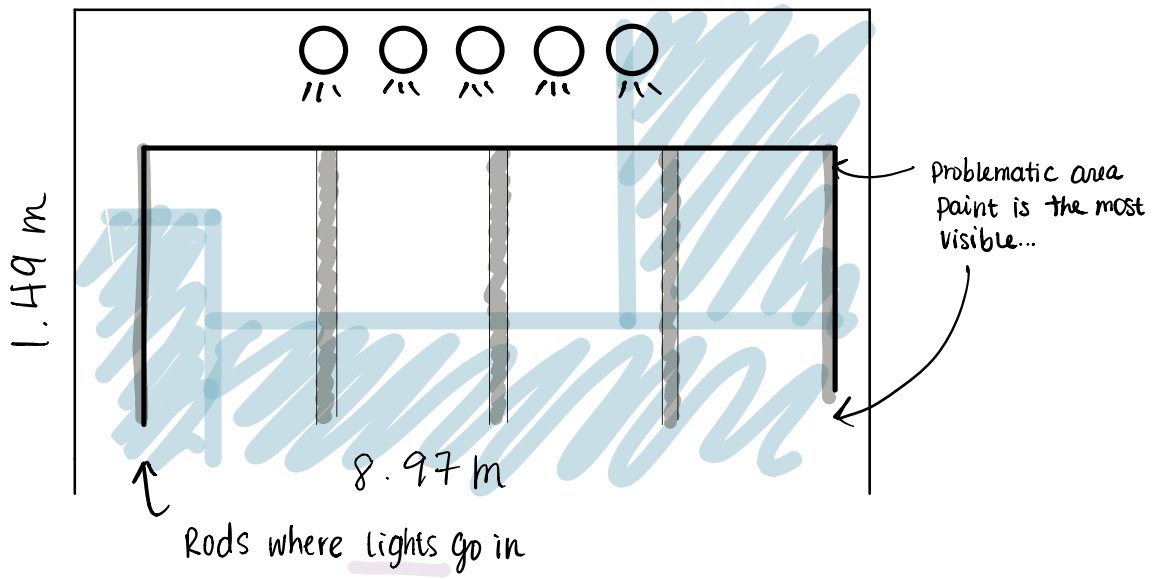
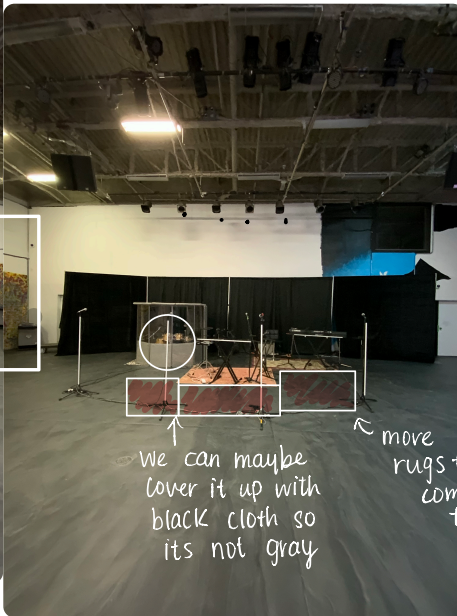


The use of lights
gives it an
eclectic vibe

⇒ This could be
a great shot ⇒



overall view





Materials we can use for the sermon

1



side table

2

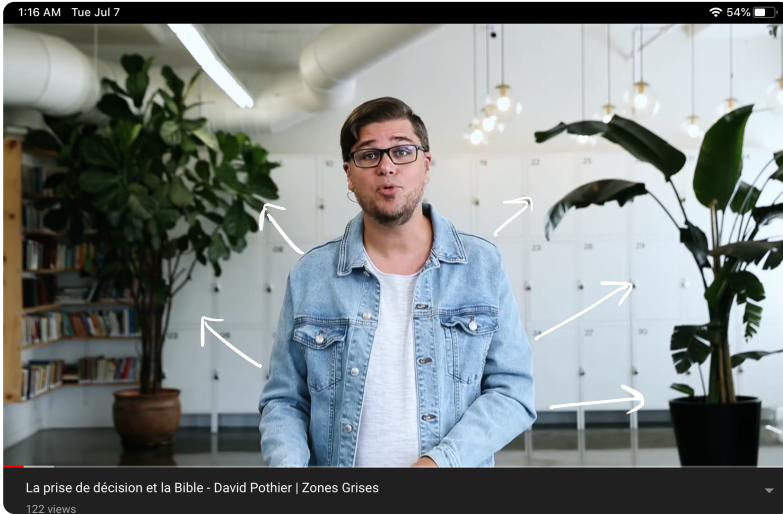


Tripod

3



Backdrop



We have to
create
depth

The subject needs
to be far away from
the decor to create
a sense of a large
and extended
space

keep in
mind
possible
side shots





Blurry subject for a crisper image the light needs to be placed more naturally.

A tripod would help tremendously



Once again the shadow can be prevented with the placing of the lighting